



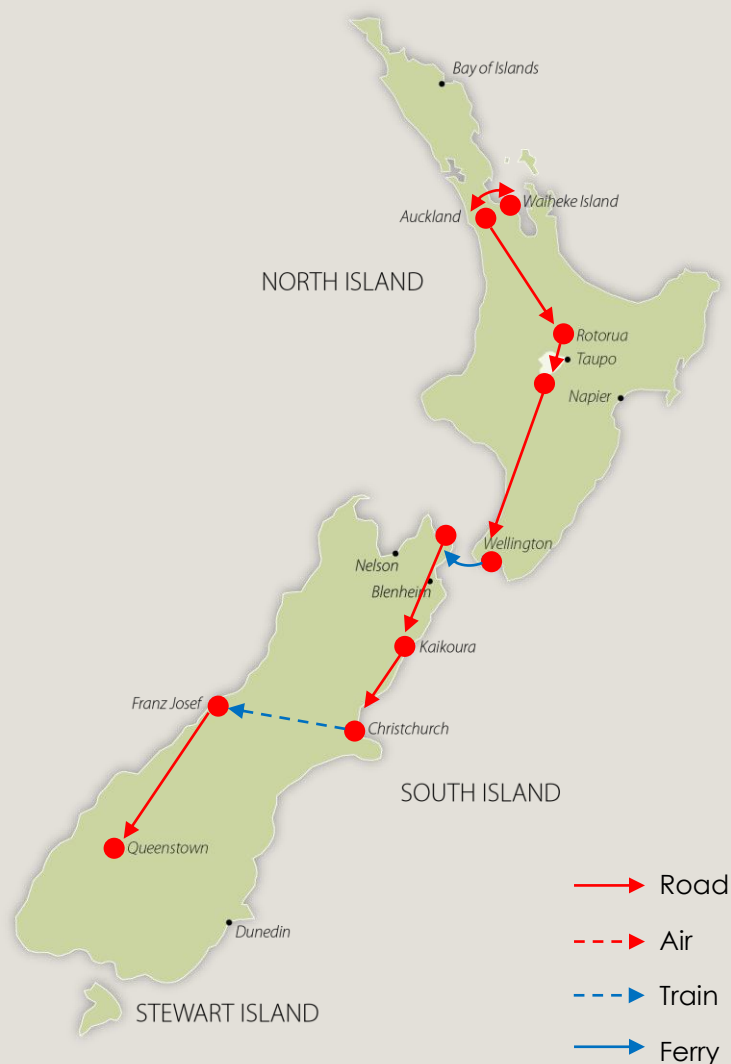
New Zealand



Mr & Mrs Smith

Your Journey Outline

The Boatshed, Waiheke Island	2 nights
Wildwood Lodge, Rotorua	3 nights
River Birches, Turangi	2 nights
Sofitel Wellington, Wellington	1 night
McCormick House, Picton	1 night
Queen Charlotte Guided Walk	3 nights
Hapuku Lodge, Kaikoura	2 nights
The George, Christchurch	1 night
Te Waonui Forest Retreat, Franz Josef Glacier	2 nights
Hulbert House, Queenstown	3 nights



Itinerary designed by The Exclusive Travel Group

exclusivetravelgroup.com: Australia - New Zealand - South Pacific - Papua New Guinea

Day 1

Arrive Waiheke Island

[The Boatshed](#)

- **Arrive into Auckland International Airport**
 - You will be met off your flight for your VIP Meet & Greet to be fast-tracked through immigration, customs and bio-security
 - Your driver will meet you in the arrivals hall for your private road transfer to Auckland Ferry Terminal
 - Your driver will assist you with your tickets for the scheduled ferry service to Waiheke Island
 - Board the scheduled ferry service to Waiheke Island
 - Your driver will meet you in the arrivals hall for your private road transfer to The Boatshed
 - Check-in to your accommodation and spend the remainder of the day at leisure
 - Dinner on own arrangements
- Boatshed Suite
 - Breakfast, arrival beverage and daily guest delighters and non alcoholic mini-bar
 - On island transfers

Day 2

At leisure, Waiheke Island

[The Boatshed](#)

- Today, enjoy exploring Waiheke Island in **The Boatshed's unique 'Picnic Truck' (Suzuki 4x4)**

Some suggested activities may include:
 - Visit local beaches
 - Stroll down Oneroa's main shopping street
 - Visit to local wineries
 - Ziplining
 - Visit Art Galleries
 - Wild on Waiheke – archery, clay bird shooting
Please note some of these will be at an additional cost
 - Dinner on own arrangements
- Boatshed Suite
 - Breakfast, arrival beverage and daily guest delighters and non alcoholic mini-bar
 - On island transfers

Day 3

Waiheke Island to Rotorua

- Your driver will meet you in the lobby for your private road transfer to Waiheke Island Ferry Terminal
- Take the **scheduled ferry service** to Auckland central
- Your driver will meet you in the arrivals hall for your private road transfer to collect your rental vehicle (Group J. 4L Intermediate AWD SUV 5 door auto or similar)
- Self-drive to Wildwood Lodge in Rotorua. Allow approx. 3.5 hours plus additional sightseeing along the journey.

You may wish to visit Hobbiton Movie Set or Waitomo Caves (additional costs)

- Check-in to your accommodation and spend the remainder of the day at leisure
- Dinner will be served in the lodge this evening

[Wildwood Lodge](#)

- The Cottage
- Breakfast, pre-dinner cocktails, a three course dinner with an extensive selection of premium New Zealand wines and minibar
- Complimentary Wifi and calls to landlines in NZ, USA, Australia and UK

Day 4

Te Puia Experience, Rotorua

- Make your way to Te Puia Geothermal Valley for your **Te Puia Daytime Experience with a Steam Box lunch and Haka Performance** (allow approx. 2-3 hours for this experience)
- Return to your accommodation and spend the remainder of the day at your leisure
- Dinner will be served in the lodge this evening

[Wildwood Lodge](#)

- The Cottage
- Breakfast, pre-dinner cocktails, a three course dinner with an extensive selection of premium New Zealand wines and minibar
- Complimentary Wifi and calls to landlines in NZ, USA, Australia and UK

Day 5

At leisure, Rotorua

[Wildwood Lodge](#)

- Spend today at your own leisure

Some suggested activities may include:

- Mitai Maori Village
- Fishing
- Mountain Biking
- White Water Rafting
- Self-guided local walks
- White Island & Mt Tarawera Trip
- Day trip to Hobbiton Movie Set
- Day Trip to Waitomo Caves

Please note some of these will be at an additional cost

- Dinner will be served in the lodge this evening

- The Cottage
- Breakfast, pre-dinner cocktails, a three course dinner with an extensive selection of premium New Zealand wines and minibar
- Complimentary Wifi and calls to landlines in NZ, USA, Australia and UK

Day 6

Rotorua to Turangi

[River Birches](#)

- Today, at your leisure, make your way to River Birches Lodge in Turangi (approx. journey of 2 hours)
- Check-in to your accommodation and spend the remainder of the day at leisure
- Dinner on own arrangements

- The Admiral's Room
- Breakfast

Day 7

Tongariro Crossing, Turangi

[River Birches](#)

- Your guide will meet you in the lodge lobby for your **Guided Tongariro Crossing walk** (allow a full day for this experience)
- Dinner on own arrangements

- The Admiral's Room
- Breakfast

Day 8

Turangi to Wellington

[Sofitel Wellington](#)

- Make your way to the Sofitel in Wellington at your leisure. Allow approx. 5 hours for this journey plus additional sightseeing along the way
- Check-in to your accommodation and spend the remainder of the day at your leisure
- Dinner on own arrangements

- Luxury Room
- Breakfast

Day 9

Wellington to Picton

[McCormick House](#)

- Self-drive to Wellington Ferry Terminal and return your rental vehicle (journey of approx. 10 minutes)
- **Depart on your Interislander ferry crossing** (journey of approx. 3.5 hours)
- Your driver will meet you in the arrivals hall in Picton Ferry Terminal for your private road transfer to McCormick House
- Check-in to your accommodation and spend the remainder of the day at leisure
- Dinner on own arrangements
- Nikau Room
- Breakfast
- Complimentary ferry, train and bus transfers by prior arrangement. Free luggage/vehicle storage for returning guests walking the Queen Charlotte Track. Free wi-fi. Complimentary off-street parking. Early check in/out services available on request

Day 10

Queen Charlotte Guided Walk

[Queen Charlotte Guided Walk](#)

- You will be collected from your accommodation this morning to depart on your four-day **Queen Charlotte Guided Walk**
- Your walk concludes at Furneaux Lodge this evening where you will enjoy a private dining experience
- Furneaux Lodge
- Dinner

Day 11

Endeavour Inlet to Camp Bay/Mahana Lodge

[Queen Charlotte Guided Walk](#)

- Today's coastal walk takes you from Furneaux Lodge to Mahana Lodge through mostly regenerating native bush to the call of bellbirds, fantails and other New Zealand native birds
- Enjoy a private dining experience with your group tonight
- Mahana Lodge
- Breakfast, lunch and dinner

Day 12

Mahana Lodge to Portage Bay/Raetihi Lodge

[Queen Charlotte Guided Walk](#)

- Depart Mahana Lodge and return to the ridgeline to continue our hike along the Queen Charlotte Track
- There is also the option for a boat ride around the bays' of the Queen Charlotte Sound today (at additional cost)
- Enjoy a private dining experience with your group tonight
- Raetihi Lodge
- Breakfast, lunch and dinner

Day 13

Portage Bay/Raetihi Lodge to Kaikoura

[Hapuku Lodge](#)

- Farewell Raetihi Lodge, board the water taxi and transfer across the bay to Portage. Your day concludes with a water taxi back to Picton, returning by late afternoon
- Collect your rental vehicle (Group J. 4L Intermediate AWD SUV 5 door auto or similar) and self-drive to Hapuku Lodge in Kaikoura (allow approx. 2 hours for this journey)
- Check-in to your accommodation
- Dinner will be served in the lodge this evening
- Upper Branch Treehouse
- Breakfast and dinner

Day 14

Whale Watch Experience, Kaikoura

[Hapuku Lodge](#)

- This morning, depart on your **Whale Watch Experience** (allow approx. 3.5 hours for this experience)
 - At the conclusion of your experience, make your way back to your accommodation and spend the remainder of the day at your leisure
- Some suggested activities may include:
- Self-guided local walks
 - Fishing
 - Dolphin Swim
 - Kayak with the Seals
 - Quad Biking
 - Kaikoura Museum
- **Please note some of these will be at an additional cost***
- Dinner will be served in the lodge this evening
 - Upper Branch Treehouse
 - Breakfast and dinner

Day 15

Kaikoura to Christchurch

[The George](#)

- Today, at your leisure, make your way to The George in Christchurch (allow approx. 3 hours for this journey plus additional sightseeing along the way)
- Check-in to your accommodation and spend the remainder of the day at leisure

Some suggested activities may include:

- Visit the International Antarctic Centre
- Guided Walking Tour
- Visit the Canterbury Museum
- Tramway Restaurant Dinner Tour
- Punting on the Avon River
- Visit Willowbank Wildlife Reserve

Please note some of these will be at an additional cost

- Dinner on own arrangements

- Premium Executive Room
- Breakfast

Day 16

Christchurch to Franz Josef Glacier

[Te Waonui Forest Retreat](#)

- This morning return your rental vehicle to the Christchurch Railway Station (journey of approx. 15 minutes)
- Depart on the **Tranz Alpine Express train from Christchurch to Greymouth** (allow approx. 5 hours for this experience)
- Upon arrival into Greymouth Railway Station, collect your rental vehicle (Group J, 4L Intermediate AWD SUV 5 door auto or similar) and self-drive to Te Waonui Forest Retreat in Franz Josef (allow approx. 2.5 hours for this journey)
- Check-in to your accommodation and spend the remainder of the day at your leisure
- Dinner will be served in the lodge this evening

- Deluxe Room
- Breakfast & Dinner

Day 17

Glacier Heli-Hike Experience, Franz Josef Glacier

[Te Waonui Forest Retreat](#)

- This morning, depart on your **Scheduled Franz Josef Glacier Heli-hike** (allow approx. 4 hours for this experience)
- Make your way back to your accommodation and spend the remainder of the day at your leisure
- You may wish to enjoy a swim at the Glacier Hot Pools (complimentary admission with your Heli-Hike)
- Dinner on own arrangements
- Deluxe Room
- Breakfast

Day 18

Franz Josef Glacier to Queenstown

[Hulbert House](#)

- Today, at your leisure, make your way to Hulbert House in Queenstown (approx. journey of 5 hours plus additional sightseeing along the way)
- Check-in to your accommodation and spend the remainder of the day at leisure
- Dinner on own arrangements
- Premium Suite
- Breakfast, refreshments during the day and pre-dinner drinks and canapes
- Personal concierge service

Day 19

Private Guided Day, Queenstown

[Hulbert House](#)

- Today your guide will meet you in the lobby for your **Private Guided Full Day Expedition** (allow approx. 5 to 8 hours for this tour)
- Your day is flexible and can be tailored to suit your interests. You may wish to include some suggested activities
 - 4x4 Safari
 - High Country Sheep & Deer Farms
 - Guided walks
 - Visit to local wineries
 - Shotover Jet
 - Biking / Mountain Biking
 - Horse Trekking
- ***Please note some of these will be at an additional cost***
- Your guide will return you to Hulbert House at the conclusion of your day
- Dinner on own arrangements
- Premium Suite
- Breakfast, refreshments during the day and pre-dinner drinks and canapes
- Personal concierge service

Day 20

At leisure, Queenstown

[Hulbert House](#)

- Spend today at your own leisure

Some suggested activities may include:

- Day trip to Wanaka, Arrowtown and/or Glenorchy
- Local self-guided walks
- Onsen Hotpools
- TSS Earnslaw & Walter Peak Farm
- Day trip to Fiordland / Milford Sound
- Scenic Flight
- Fishing
- Skyline Queenstown Gondola & Luge
- Visit local wineries

Please note some of these will be at an additional cost

- Dinner on own arrangements

- Premium Suite

- Breakfast, refreshments during the day and pre-dinner drinks and canapes

- Personal concierge service

Day 21

Depart Queenstown

- Self-drive to Queenstown Airport and return your rental vehicle (journey of approx. 30 minutes)
- **Depart Queenstown on your International flight**



The Boatshed, Waiheke Island

2 nights

The Boatshed is situated on a sun-drenched bay on the island of Waiheke, off the coast of Auckland. This luxury hotel is inspired by the early 1900 boatsheds that scatter the country's shores. Offering nine beautifully appointed guest suites, each with panoramic views and a high level of design detail, open fires and a relaxed pallet.

Take a stroll amongst an eclectic mix of award-winning vineyards, sophisticated alfresco restaurants, artists' studios and galleries or along one of the many deserted, golden, sandy beaches.

Dining is a relaxed affair – the hotels extensive kitchen gardens supply the kitchen with daily produce to accompany what is best from land to sea, plenty of alfresco places to eat make this one of the highlights of staying at The Boatshed and something not to miss – only available to guests staying in house.

Itinerary designed by The Exclusive Travel Group

exclusivetravelgroup.com: Australia - New Zealand - South Pacific - Papua New Guinea



Wildwood Lodge, Rotorua

3 nights

Wildwood Lodge, Rotorua. Absolute lake edge luxury lodging and set in five acres of magnificent landscaped gardens with two hundred metres of totally private lake frontage on the shores of tranquil and historic Lake Rotoehu. Wildwood is one of the largest privately owned lake edge estates in the North Island with unsurpassed lake views, and no other houses being visible from anywhere on the entire estate, Wildwood is located only fifteen minutes from the airport and a comfortable and pretty drive from the city, yet away from the sulphur smells. It has both helipad and float plane docking facilities.

Itinerary designed by The Exclusive Travel Group

exclusivetravelgroup.com: Australia - New Zealand - South Pacific - Papua New Guinea



Wildwood Lodge at Leisure

Wildwood Lodge is situated on State Highway 30, approximately 25 minutes from Rotorua central, 15 minutes from Rotorua Airport and 45 minutes from Whakatane. The Lodge is nestled on the shores of Lake Rotoehu, one of a cluster of lakes in the area. It is where, in 1823, Hongi Hika and his warriors paddled and dragged their canoes to fight the Arawa people on Lake Rotorua. A delightful, short 45 minute walk through Hongi's Track, amongst native bush, replicating part of the journey, is only a few hundred meters from the Lodge.

More suggested activities to enjoy are:

- Hinehopu Golf Club, is a two minute drive from your luxury Rotorua lodge and is available to green fee players. It is a delightful country course surrounded by magnificent bush and high bluffs.

- Whakatane township is a delightful day trip offering miles of sandy beaches and some of the finest salt water fishing in New Zealand.

- Numerous rivers are within easy reach of the Lodge, either by 4WD or helicopter. Rotorua has been granted the World Fly Fishing Championships twice, the only city in New Zealand to hold this honour.

- White Island is an active volcano thirty miles off the East Coast of New Zealand. Helicopter flights operate scheduled daily services to the Island and a pickup can be arranged from the landing pad at the Lodge.

- One of the worlds' finest sporting clay ranges is situated at the end of our lake and is just a short drive from the Lodge.

- Rotorua township is known for its geothermal activity, bubbling mud pools, geysers, thermal springs and many other attractions.

Note, these activities will incur additional costs

Itinerary designed by The Exclusive Travel Group

exclusivetravelgroup.com: Australia - New Zealand - South Pacific - Papua New Guinea



Te Puia Daytime Experience with a Steambox lunch

The Te Ra + Kai Ngawha Tour includes an extended tour of Te Puia, an interactive weaving experience, plus a traditionally cooked steambox lunch to enjoy in front of Pohutu Geyser.

When you first arrive you will discover the unique preparation of a traditionally cooked Maori hangi.

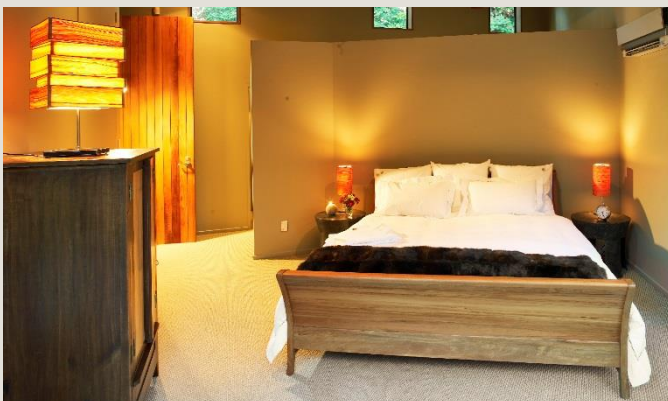
In an authentic Hangi make your choice from a selection of raw foods including: chicken, corn, kumara, pumpkin, potato, cabbage, watercress, and gourmet bread stuffing. Once you have placed your favourite delicacies inside the hangi basket, you are ready to head to Nga Wha Puapua, the constantly active steam vent opening used to cook your kai (food) the authentic way.

Explore Te Puia in an Extended Guided Tour (90 minutes) where you visit geothermal wonders, meet our iconic kiwi bird at the Kiwi House, and learn about the fascinating history and traditions of our Maori culture.

Hands-on Weaving at the national weaving school where you will learn how our people perfected the art of weaving with native flax leaves, and have the chance to craft your own masterpieces to take home with you and treasure forever.

Following your guided tour and hands-on weaving experience, you will return to Pohutu Geyser to enjoy your lunchtime feast in front of the southern hemisphere's largest active geyser.

Your experience also includes a Haka Cultural Performance (approx. 45 minute duration)



River Birches, Turangi

2 nights

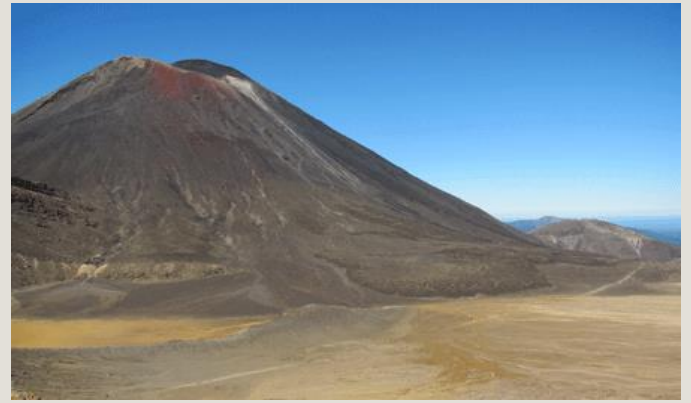
Luxury Tongariro lodge accommodation in a superb New Zealand location, close to the renowned Tongariro Crossing and only footsteps away from the world famous fly fishing on the Tongariro River.

River Birches offers boutique New Zealand lodge accommodation in Turangi, on the southern edge of Lake Taupo. The lodge provides quiet seclusion and understated luxury accommodation. Set within a peaceful garden-scape beside the world-famous Tongariro River, try your hand at trout fishing in one of New Zealand's most beautiful rivers by day, and enjoy our luxury lodge accommodation by night. River Birches is a short drive from the Tongariro National Park, where you can select from a range of exciting activities, from the renowned Tongariro Crossing, to winter skiing on Mount Ruapehu.

There is a well-equipped fitness room, library and spacious living areas.

Itinerary designed by The Exclusive Travel Group

exclusivetravelgroup.com: Australia - New Zealand - South Pacific - Papua New Guinea



Private Guided Tongariro Alpine Crossing Walk

Enjoy the famous Tongariro Alpine Crossing with an exclusive guide. This 19km trek is New Zealand's best day one day walk.

The track leads up to the saddle between Mt. Ngauruhoe and Mt. Tongariro. The landscape on Tongariro is peppered with the different coloured and shaped craters that have been active at different periods, scoured volcanic rocks, mountain springs, and brightly coloured emerald lakes.

Your exclusive guided trip will provide you with a really personal, informative and friendly day you will never forget.

Your guide will also 'work behind the scenes' constantly assessing the weather and track conditions, timing for your Ketetahi personalized transport pick-up, and other little details that will maximize your enjoyment. They can also tailor the trip to accommodate different fitness levels and know a few tricks about avoiding exposed weather or crowded areas.

Your experience includes:

Exclusive guide/s, return transfers, lunch, crampon and ice axes if required for winter conditions, all clothing and footwear hire.

Recommended gear to bring with you - water (1-2 litres), personal medications, sun hat, sunscreen, sunglasses, backpack per person, hiking boots/shoes, walking trousers, 1 light top and 2 warm top layers (wool, merino, thermals, fleece, soft shell etc are good layers and a waterproof raincoat.

Itinerary designed by The Exclusive Travel Group

exclusivetravelgroup.com: Australia - New Zealand - South Pacific - Papua New Guinea



Sofitel Wellington, Wellington

1 night

Ideally positioned in the Central Business District and government hub, Sofitel Wellington is within walking distance from the major tourist attractions, with many restaurants and cafes nearby.

The hotel provides great views of lush hillsides and the Botanical Gardens. All 129 Guest Rooms are beautifully appointed in vintage gold and bronze tones and feature indulgent rain showers.

Located in the heart of New Zealand's vibrant capital, Sofitel Wellington is just a 5-minute walk to The Beehive Parliament building, and 15-minutes from the city's tranquil Botanic Garden. Take a stroll to Lambton Harbour, explore inner city retail and dining options, or head to Te Papa Museum or St James Theatre to experience a taste of New Zealand culture.

Itinerary designed by The Exclusive Travel Group

exclusivetravelgroup.com: Australia - New Zealand - South Pacific - Papua New Guinea



Interislander

Sail between Wellington and Picton on an Interislander Cook Strait ferry and enjoy the spectacular Marlborough Sounds on one of the most scenic ferry journeys in the world.

The Interislander ferry is the longest running Cook Strait ferry service in Aotearoa New Zealand. Interislander sailings are between Wellington (North Island) and Picton (South Island). Our Interislander ferry trip is known as one of the most beautiful ferry cruises in the world. The Cook Strait ferry covers 92 kilometres (58 miles) and takes just over three hours. The journey between Wellington and Picton is one of New Zealand's most iconic tourist experiences.

Itinerary designed by The Exclusive Travel Group

exclusivetravelgroup.com: Australia - New Zealand - South Pacific - Papua New Guinea



McCormick House, Picton

1 night

McCormick House is an historic, Picton bed and Breakfast accommodation with contemporary comfort and modern facilities.

Set in a quiet, sunny location, on half an acre (2000sqm) of private, established, woodland gardens, McCormick House is ideally located just 3 minutes drive from Picton Interisland ferry, bus stops and train station, or 20 minutes drive from Blenheim. Complimentary local Picton transfers are available by prior request.

Picton is your ideal base for walking the Queen Charlotte Track or visiting the Marlborough wine region.

Eco friendly McCormick House is also only minutes walk from Picton town centre, cafés, restaurants and galleries. Water activities of the picturesque Queen Charlotte Sound include boat cruises, swimming, diving, kayaking, sailing, fishing, eco tours, dolphin watching and Picton walking & mountain bike tracks.

Itinerary designed by The Exclusive Travel Group

exclusivetravelgroup.com: Australia - New Zealand - South Pacific - Papua New Guinea



Scheduled Guided Hike on Queen Charlotte Track

Enjoy a guided hike on Queen Charlotte Track. This guided walk comes to rest each night at a waterfront lodge. If you seek superb accommodation and a trip that is all-inclusive of fine local wines and food, this is the trip for you! After an exhilarating hike each day with a small group of fellow walkers, come to rest at Furneaux Lodge, Mahana Lodge and Raetihi Lodge. Here you'll enjoy a beautiful meal matched with fine Marlborough wine, all enjoyed in a stunning setting. Your track experience is made all the more easy by the Queen Charlotte Track's unique water taxi pack transfer system leaving you to walk with just a day pack. Our knowledgeable guides will attend to your every need to ensure all you need do is walk and enjoy!

Board the water taxi, journeying from Picton to Furneaux Lodge where you will enjoy a private dining experience and the very best ensuite units.

From Furneaux Lodge, the track continues through native bush and over a small swing bridge to the head of Endeavour Inlet. Pause there to learn more about antimony and the mining industry that thrived there in the 1880s. Follow the main track onwards and into Big Bay where pristine native beech forest awaits before working your way towards Camp Bay and Punga Cove. Truly grand views abound round every corner – a wonderful reward indeed. Stare in awe at the sunken river valleys of the Marlborough Sounds from the iconic Eatwell's Lookout. At different times you can see both the Queen Charlotte and Kenepuru Sounds as you walk, a truly spectacular section of the track.

Farewell Raetihi Lodge, board the water taxi and transfer across the bay to Portage. Ascend to the ridgeline once again, enjoying stunning views back towards Picton as well as into the turquoise waters of the Kenepuru Sound. Open farmland and a grand native bush section to finish is a fitting finale after four days of walking. Take time for a photo stop at the picturesque Davies Bay – you won't want the journey to end. Today you return by boat from the Anakiwa Jetty to Picton, arriving back by late afternoon.

Itinerary designed by The Exclusive Travel Group

exclusivetravelgroup.com: Australia - New Zealand - South Pacific - Papua New Guinea



Hapuku Lodge, Kaikoura

2 nights

Hapuku Lodge and Tree Houses is a contemporary country hotel located on a deer breeding farm in the South Island of New Zealand, 12 kilometres North of the renowned eco-marine town of Kaikoura.

It sits snugly at the base of the Kaikoura Seaward Mountain Range, with the Kaikoura coast and famed Mangamaunu Bay only a kilometre to the east. The Lodge provides luxurious accommodation on Kaikoura's rugged coastline, a place for guests to relax in its intimate indoor/outdoor setting and a place from which they can explore the larger maritime landscape of Kaikoura.

With a totally organic garden Hapuku has been designed to provide a microcosm of the surrounding environment. The lodge also shares the land with a top quality deer stud, and oil-producing olive grove.

Enjoy the facilities of an on site restaurant, 15 metre solar heated lap pool, pool house – guest change room/rainforest shower, in house spa treatment and mountain bikes.

Itinerary designed by The Exclusive Travel Group

exclusivetravelgroup.com: Australia - New Zealand - South Pacific - Papua New Guinea



Hapuku Lodge at Leisure

While there are many things to do in the wider Kaikoura district, at the Lodge and within its environs there is plenty to do.

One can try one's skill at country and mountain biking with the Lodge's mountain bikes (and helmets). A variety of walks can be taken from the Lodge, from short to long, beach to bush, with a picnic basket if desired, including a botanical tour of the local native bush.

An ocean fishing trip can be arranged, which can include the opportunity to catch a crayfish. Or take a short drive up the highway any time from December through May to experience the wondrous sight of baby seals frolicking in the Oahu waterfall.

Other suggestions to consider are: Explore the local Hapuku trails on a Mountain bike
 Help pick olives (May-June)
 Watch the harvesting of antlers from the farm's stags
 Learn to surf at famed Mangamaunu surf break
 Swim in the ocean or sit by the Pool/Sauna
 Have a massage
 Take a picnic excursion
 Or just sit by the fire with a glass of wine

Some of these activities may incur an additional cost.

Itinerary designed by The Exclusive Travel Group

exclusivetravelgroup.com: Australia - New Zealand - South Pacific - Papua New Guinea



Whale Watch Kaikoura

Kaikoura is New Zealand's world famous whale watching destination. Sperm Whales can be seen here year-round while 7 other whale species visit regularly.

Join one of these unique tours to experience the magnificence of these ocean giants.

Every Whale Watch tour is a unique experience and the sightings vary. Giant Sperm Whales are the stars of the show and year-round residents.

A typical Whale Watch tour may encounter New Zealand Fur Seals, pods of Dusky Dolphins and the endangered Wandering Albatross. Depending on the season you may also see migrating Humpback Whales, Pilot Whales, Blue Whales and Southern Right Whales.

Kaikoura often hosts the world's largest dolphin - the Orca - and is home to the world's smallest and rarest - the Hector's. Kaikoura also attracts the largest concentration and variety of seabirds on mainland New Zealand including 13 species of Albatross, 14 varieties of Petrels and 7 types of Shearwater.

Itinerary designed by The Exclusive Travel Group

exclusivetravelgroup.com: Australia - New Zealand - South Pacific - Papua New Guinea



The George, Christchurch

1 night

The George is a small luxurious hotel that re-writes the meaning of hospitality within New Zealand. Quite simply from the moment you step inside this tranquil Christchurch hotel, your every accommodation need is catered for in the most friendly and personal manner. Impeccable service in an intimate ambience is guaranteed at The George, the only Christchurch Hotel with a one-to-one staff to guest ratio.

Located picturesquely in the heart of Christchurch overlooking its very own "Central Park," this very individual boutique hotel is just a step away from all the key attractions including the tram, arts market, restaurants, theatres and gardens. Boasting two world class restaurants that rate amongst the best in New Zealand, visitors come from far and wide to savour the delicious cuisine in both Pescatore and 50 on Park.

Itinerary designed by The Exclusive Travel Group

exclusivetravelgroup.com: Australia - New Zealand - South Pacific - Papua New Guinea



Tranz Alpine, Christchurch to Greymouth

Climb aboard one of the world's most famous train journeys, travelling from one coast of the South Island to the other between Christchurch and Greymouth on the TranzAlpine. Cross the fertile farmlands of the Canterbury Plains, and enjoy thrilling vistas over deep gorges as you travel alongside the ice-fed Waimakariri River. Traverse the mighty Southern Alps, where spectacular views of the chiselled alpine landscape will take your breath away at every turn.

Descend through thick stands of native beech forest to your destination, Greymouth – a great base for exploring this unspoiled region with its mighty glaciers, wild rivers and famous Punakaiki pancake rocks.

The new world class carriages, built right here in New Zealand, were designed to showcase the fantastic landscape. All carriages feature wide panoramic side & roof windows, with un-tinted & non-reflective glass allowing for great photo opportunities. Open air viewing decks also ensure nothing gets in the way of you and your camera, as well as a licensed cafe offering a range of food and beverages and GPS triggered at-seat commentary. The TranzAlpine train is a truly unique experience, and the best way to travel between Christchurch and Greymouth.

Itinerary designed by The Exclusive Travel Group

exclusivetravelgroup.com: Australia - New Zealand - South Pacific - Papua New Guinea



Te Waonui Forest Retreat, Franz Josef Glacier 2 nights

A haven from the city rush, a foray into New Zealand's pristine wilderness – Te Waonui Forest Retreat is truly a place to relax and refresh.

Encircled by native bush, it's only natural to find Te Waonui Forest Retreat at the cutting edge of sustainable accommodation. Natural lighting is abundant, building materials have been chosen to minimise environmental impact, and the Retreat's carbon footprint is reduced with energy efficient design. Furniture and fittings incorporate natural wool carpets, organic cotton bedspreads and even possum skin cushioning, in-keeping with the character of the region.

The sustainable, eco-friendly feel is enhanced by soft timbered detailing, natural colour schemes and recycled local materials to make the hotel at one with its magical surroundings.

Itinerary designed by The Exclusive Travel Group

exclusivetravelgroup.com: Australia - New Zealand - South Pacific - Papua New Guinea



Franz Josef Glacier Heli-hike

The Franz Josef Glacier helicopter tour is a once in a lifetime experience that should not be missed. From the moment you step on board your chopper, your experienced and highly trained pilot will whisk you away, up and over the jaw-dropping landscape.

After a thrilling flight, high above the rugged terrain, you will land on the glacier, ready to undertake a three hour guided glacier hike. Your friendly guide will lead you through some of the most pristine and awe-inspiring glacier scenery in the world. Your guide will choose your route carefully as you go and, with an eye for the most spectacular ice formations, you'll soon be making your way through an extraordinary land of towering peaks and glistening blue ice.

You'll enjoy panoramic views of the surrounding mountains, and with plenty of photo opportunities, and the chance to learn more about this magnificent glacier, this will almost certainly be your most memorable New Zealand experience and one you will remember forever.

Afterwards enjoy complimentary general admission into the Main Pools at the fabulous Glacier Hot Pools! (upgrade options are available for private pools at additional cost)

For the Heli Hike you are provided with a breathable Rain Jacket, Waterproof over-trousers (if required), socks and sturdy boots (or you have the option to wear your own hiking boots) - Crampons (with small waist bag) for superior glacier grip, Woollen hats and gloves (if required).

Please bring with you 2-4 warm upper body layers ideally woollen or polypro (not cotton) - Quick drying trousers or shorts (no jeans), Food and drink for the day, sunglasses, sunscreen and a camera.

DO NOT bring iPods / MP3 players, Mobile Phones, Passports, Wallets or Car / Room Keys.

Itinerary designed by The Exclusive Travel Group

exclusivetravelgroup.com: Australia - New Zealand - South Pacific - Papua New Guinea



Hulbert House, Queenstown

3 nights

Hulbert House is a beautifully restored Victorian villa with plenty of stories to tell dating back to 1888.

Steeped in authentic history, Hulbert House brings you a distinctive combination of historic elegance and contemporary service. Situated one block from Queenstown's vibrant central city, Hulbert House is imbued with a sense of serenity.

With six uniquely designed suites all offer stunning views overlooking Lake Wakatipu or the Skyline Hill.

Itinerary designed by The Exclusive Travel Group

exclusivetravelgroup.com: Australia - New Zealand - South Pacific - Papua New Guinea



Private Guided Full Day Expedition

Want an adventure that's extra special? We'll work with our trusted adventure partners to put together an itinerary you'll love. They have exclusive access to amazing places and offer an amazing day out exploring hidden gems of New Zealand's South Island.

Suggested options are:

Explore Central Otago's unique landscape in a 4x4 with your own knowledgeable driver-guide. Learn about the history of Queenstown and its surrounding areas and gain access to breath-taking locations and scenery. Add on a guided tour of a private sheep and deer farm, a tour of world class wineries, and also Arrowtown and Old Cromwell.

Or get away from it all and explore the breath-taking wilderness of the South Island, with access to some of the most spectacular walking and hiking tracks in the region. Add-on options are return helicopter and jet boat rides.

Another unique way to see the scenery is horse trekking or Quad biking, perhaps followed by a one hour helicopter ride to remote Lochnagar.

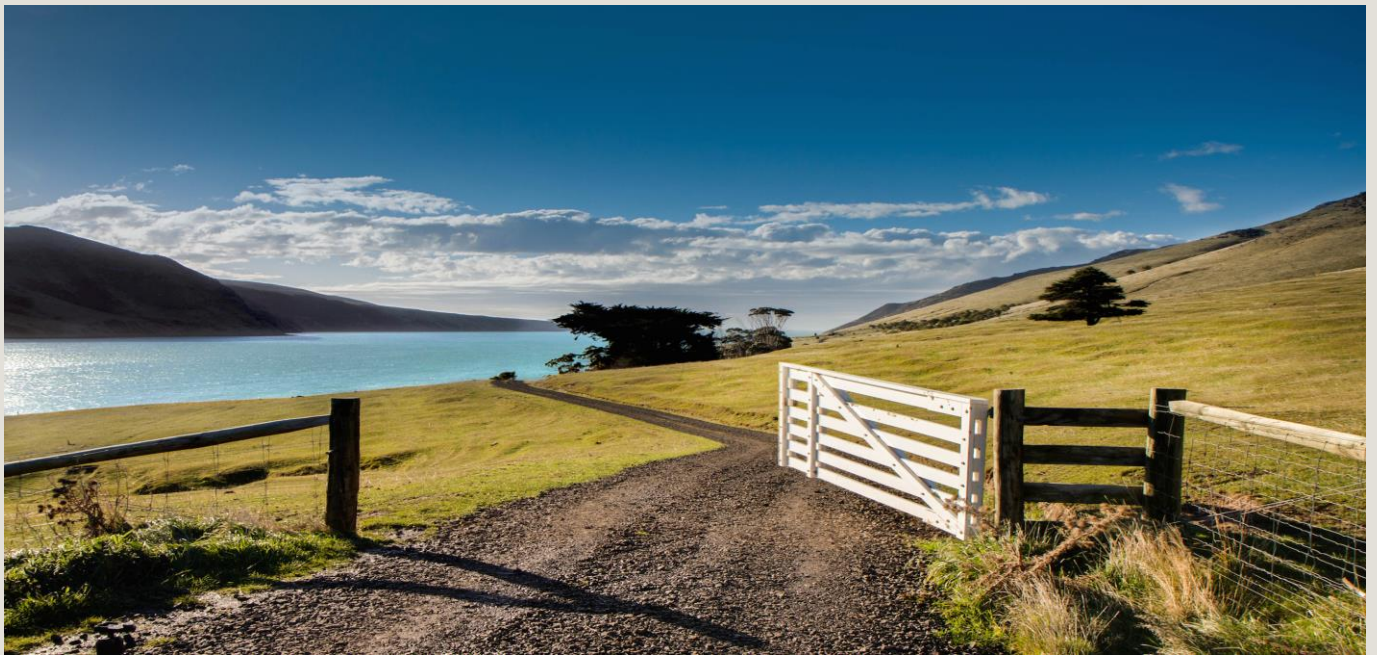
A personalised tour of Queenstown and Arrowtown's arts scene, punctuated by visits to world renowned wineries and cellar doors. Visit a range of art galleries according to your tastes and meet Tim Wilson, one of New Zealand's leading landscape artists.

Please note that some of the experience will incur an additional cost.

Your experience includes exclusive use of a guide and vehicle, gourmet lunch and a bottle of local wine or 2 beers, water and snacks, pick up and drop off from accommodation, the use of all on board vehicle services including reference books, binoculars, day packs, walking poles, seating, tables.

Itinerary designed by The Exclusive Travel Group

exclusivetravelgroup.com: Australia - New Zealand - South Pacific - Papua New Guinea



Itinerary designed by The Exclusive Travel Group

exclusivetravelgroup.com: Australia - New Zealand - South Pacific - Papua New Guinea